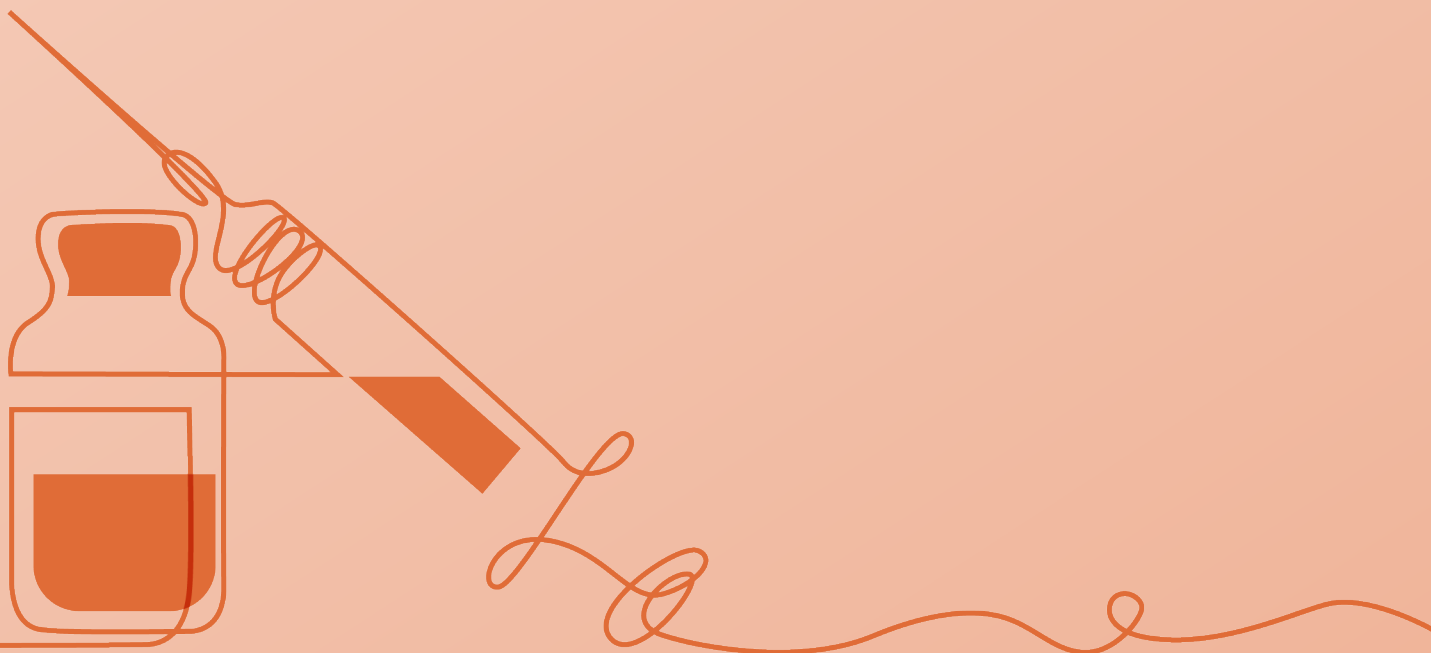


2024 PROSPECTUS

# Immunisation Professional Development Conference



# Come and join us for our 2024 Immunisation Professional Development Conference (IPDC)



Wominjeka,

Our goal at Benchmark Group is to support Primary Healthcare professionals to develop and build careers for the future. Our courses help clinicians to become qualified and confident to operate at the top end of their scope of practice and students have access to our group of highly skilled and specialised trainers still working in industry.

We also know that our model of learning is practical and brings community-based clinicians together to learn, connect and grow.

We are a well respected and well established organisation with 16 years of industry experience, knowledge and relationships. We are proud to partner with Commonwealth and Jurisdictional Health

agencies, private sector institutions, Aboriginal Community Controlled Health Organisations and peak bodies, Primary Healthcare Networks and directly with Healthcare Providers.

We have a voice in the industry and ultimately working in partnership to improve healthcare for all Australians and particularly in priority populations. A significant proportion of our work is helping to build real education solutions that achieve equality in health and life expectancy for Aboriginal and/or Torres Strait Islander peoples.

The team and I are proud to be hosting this event, we'd love you to join us.

**Drew, CEO Benchmark Group.**

## IPDC 2024 will feature:



Leading  
Australian clinical  
experts



Up-to-date research  
in the area of  
immunisation



Practical  
workshops



Breakfast  
plenary  
opportunities



Social networking  
events



Rural and remote  
student sponsorship  
opportunities



# Why immunisation?

## Accredited Training

We have rapidly become the 'go to' organisation for Immunisation training and ongoing education to maintain currency for Nurses, Midwives and Aboriginal Health Practitioners nationally. As a HESA accredited course, we have enrolled close to **4,000** students over the last 4 years to actively play a significant role during the pandemic.

While Immunisation patient safety is critical, at Benchmark Group a core focus is practitioner safety.

Ultimately we know that immunisation has been, and remains, a simple, timely, effective and affordable way to improve health, delivering positive outcomes for people of all ages.

Since 2020 we have upskilled close to

**4,000** students as Endorsed Nurse Immunisers

## Why Attend?

### *Why attend our 2024 Immunisation Professional Development Conference?*

The purpose of the event is to deliver a blend of hands-on skills-based workshops, and updates from experts in the field.

Content will include, COVID and the changing focus in Primary Healthcare, Managing RSV in Primary Healthcare Settings, NIP and priority populations, Vaccine Hesitancy, Culturally Safe Practice in Immunisation, Vaccine Strategies and Promotions, Travel vaccines and Complex Catch-Ups.

Spots are limited and are filling up quick, [register today](#).

Location	Dates	Expected attendees
Sydney	Wednesday 1st - Thursday 2nd May 2024	130

Enjoy the unique opportunity to contribute 15 hours to your 2024 CPD. [Register Here](#)



# Agenda

## Pre conference

Time	Event	Location
9 - 5pm	Session 1 - Immunisation Practice Workshop	A Room
9 - 5pm	Session 2 - Fundamentals Workshop (non-accredited)	B Room

## Day 1

Time	Event	Location
8:30 - 9:15am	Registration/coffee	A Room
9:15 - 10am	Acknowledgement of Country and Introduction	B Room
10 - 10:30am	Morning Tea	D Room
10:30 - 12:15pm	<b>COVID</b>   <i>A changing focus for primary healthcare. Current recommendations</i>	A Room
	<b>Catchups Fundamentals #1</b>   <i>A practical session exploring the principles of undertaking a catchup</i>	B Room
	<b>Aboriginal and/or Torres Strait Islander Health - Jurisdictional Considerations</b>   <i>Exploring the roles of Aboriginal and/or Torres Strait Islander Health Practitioners and Health Workers and priority populations</i>	C Room
12:15 - 1pm	Lunch	D Room
1 - 2:45pm	<b>Vaccine Strategies and Promotions</b>   <i>Explore ways to engage in opportunistic conversations for vaccine discussion while exploring data extraction to boost uptake</i>	A Room
	<b>Immunisation Currency &amp; Resources</b>   <i>Understand key vaccine resources and how to maintain currency in primary healthcare</i>	B Room
	<b>Managing RSV in Primary Healthcare settings #1</b>   <i>What is RSV, and reviewing current data for management in the primary healthcare setting</i>	C Room
2:45 - 3:15pm	Afternoon Tea	D Room
3:15 - 5pm (CPR will finish 5:30pm)	<b>Managing Emergencies &amp; CPR #1</b>   <i>Managing adverse events, including administration of adrenaline and an accredited CPR update</i>	A Room
	<b>Travel Health and Vaccinations #1</b>   <i>Explore current recommendations for travel vaccines and understand current data and caseload</i>	B Room
	<b>Catchups Fundamentals #2</b>   <i>A practical session exploring the principles of undertaking a catchup</i>	C Room
5:30 - 6pm	Drinks and Networking	D Room
6 - 8pm	<b>Seasonal Respiratory Diseases Dinner</b>   <i>A comprehensive review of the current seasonal immunisation advice, including influenza, COVID and RSV</i>	D Room



# Agenda

## Day 2

Time	Event	Location
8 - 9:15am	<b>Breakfast Plenary - Culturally Safe Approach to Immunisation Practice</b> <i>  An introduction to a Culturally Safe approach to immunisation practice</i>	D Room
9:15 - 11am	<b>Catchup Complex</b>   <i>A practical session exploring a more comprehensive approach to undertaking challenging catchups</i>	A Room
	<b>Vaccine Hesitancy</b>   <i>Understanding different types of hesitancy and how to access current professional and consumer resources</i>	B Room
	<b>Travel Health and Vaccines #2</b>   <i>Explore current recommendations for travel vaccines and understand current data and caseload</i>	C Room
11 - 11:30am	Morning Tea	D Room
11:30 - 12:45pm	<b>Plenary - NIP and Priority Populations</b> <i>  Reviewing adult, adolescent and infant with a focus on the burden of disease in priority populations</i>	D Room
12:45- 1:30pm	Lunch	D Room
1:30 - 3:15pm (CPR will finish 3:45pm)	<b>Managing Emergencies &amp; CPR #2</b>   <i>Managing adverse events, including administration of adrenaline and an accredited CPR update</i>	A Room
	<b>Cold Chain</b>   <i>A practical session exploring the foundations of cold chain management documentation and notification</i>	B Room
	<b>Managing RSV in Primary Healthcare Settings #2</b>   <i>What is RSV, and reviewing current data for management in the primary healthcare setting</i>	C Room
3:15pm	Conference Close	



# Contact & Bookings

## Benchmark Group

### Contact Us

Ground Floor, 101 Cremorne St,  
Cremorne VIC 3121

P | 0415 386 535

E | [john@benchmarkgroup.com.au](mailto:john@benchmarkgroup.com.au)

W | [benchmarkgroup.com.au](http://benchmarkgroup.com.au)

[Register Here](#)

Thank you!

