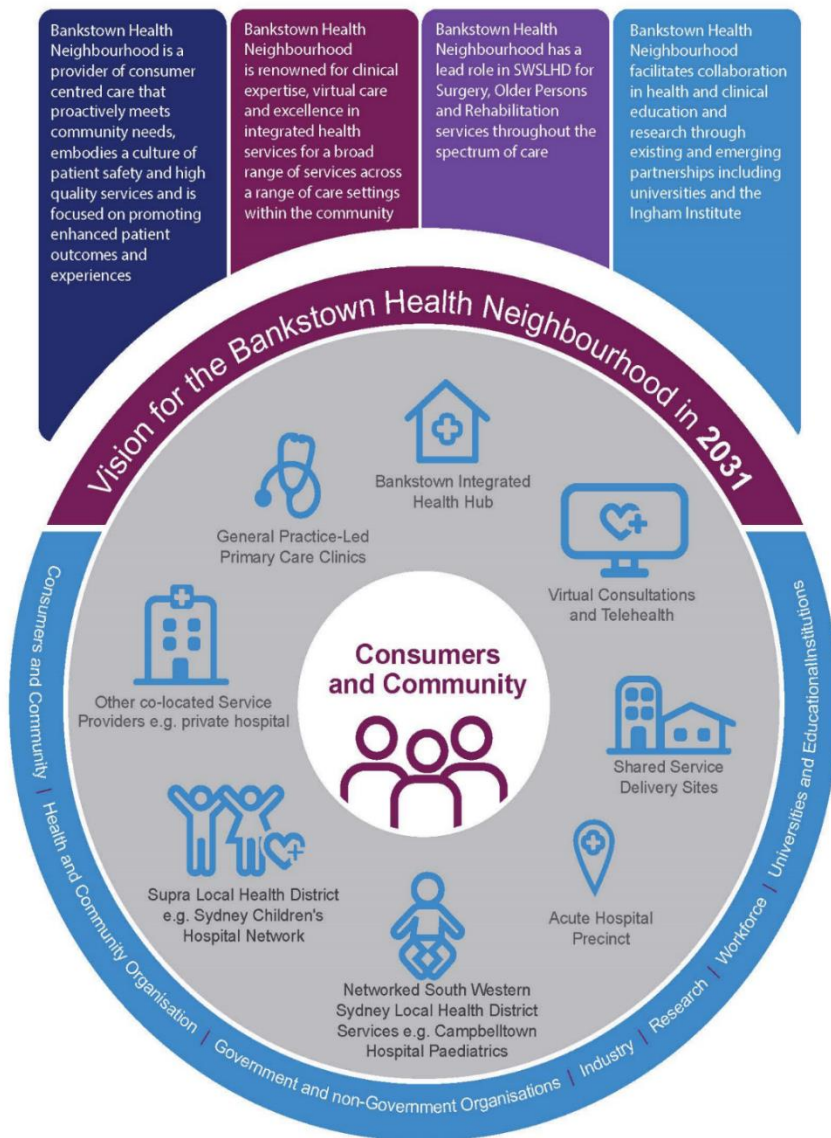


Background

The NSW Government has committed \$1.3 billion for the development of a new Integrated Health Precinct within Bankstown, with early works to commence by March 2023. A site for this new health facility is yet to be determined, although site identification planning has commenced.

Preliminary planning has been done to understand the scope and volume of services that will be required to 2026 and beyond and to define a vision for the future Bankstown Health Neighbourhood.

Vision: To develop an integrated and virtually enabled health neighbourhood that is a demonstrator site for future healthcare showcasing digital and virtual care solutions.



Bankstown Health Neighbourhood Models of Care Project

The Bankstown Health Neighbourhood Models of Care Project involves the development of 52 specialty service Models of Care and 18 Support Service Statements to help articulate the way health services will be provided across the Bankstown Health Neighbourhood beyond 2026.

The process to develop these Models of Care commenced in November 2019 and should be complete by mid-2020.

Attachment 1 outlines all the Models of Care and Support Service Statements being developed through the process.

Digital Transformation Strategy

To achieve the vision of the Bankstown Health Neighbourhood a Digital Transformation Strategy is also being developed to articulate opportunities for the inclusion of digital and virtual health care into the future.

To get involved in either of these projects, please feel free to contact the Planning Project Team:

	Name	Position & Organisation	Contact Details
Planning Project Team	Simone Proft	Manager, Planning Unit SWSLHD	E: Simone.Proft@health.nsw.gov.au P: 02 8738 5760 / M: 0459 868 287
	Leah D'Souza	Principal Consultant, Leah D'Souza Consulting	E: leah@ldsconsulting.com.au P: 0407 577 710
	Chelsea Nichols	Project Officer, Planning Unit SWSLHD	E: Chelsea.Nichols@health.nsw.gov.au P: 02 8738 6955

Model of Care Groups

As part of the Bankstown Clinical Services Planning the following MoCs will be developed. This aligns with the SWSLHD Clinical Stream structure and will support the consistency of MoC development throughout the LHD. The specialist consultancy will support selected MoC where it has been identified that significant value would be gained in enhancing the integration, comprehensiveness and digital health elements of the MoC. The LHD would support the development of the other MoC.

Key	Consultant supported
	LHD-wide
	Project Officer supported
	Support Services

Aged Care and Rehabilitation Clinical Stream

- Aged Care (Inpatient including Neurology and Stroke)
- Aged Care (Community / ASET)
- Rehabilitation

Cancer Clinical Stream

- Medical Oncology
- Radiation Oncology (LHD Wide MoC)
- Palliative Care
- Haematology
- Dermatology (LHD Wide MoC)
- Breast Services (Surgery and Assessment)

Cardiovascular Stream

- Cardiology (including Diagnostics)
- Vascular Services
- Renal Services (LHD Wide MoC)

Complex Care and Internal Medicine Stream

- General Medicine and Medical Assessment Unit (including Toxicology)
- Ambulatory Care / Hith (including Day hospital and infusion centres and community nursing connections)
- Infectious Diseases
- Diabetes and Endocrinology (including Obesity and Metabolic)
- Respiratory
- Rheumatology
- Immunology/Allergy
- Clinical Genetics (LHD Wide MoC)

Paediatrics and Neonatology

- Paediatric / Adolescents Services (including Hith, Transitional care and surgery)
- Special Care Nursery

Surgical Specialties

- ENT
- Ophthalmology
- Plastics
- Orthopaedics
- Neurosurgery

- Gastroenterology, GI Surgery, Liver, Urology, Head and Neck Stream
- Urology (including Pelvic)
 - Gastroenterology
 - General and colorectal surgery including Colorectal, General and Endocrine
 - Upper GI Surgery (including Liver surgery, Pancreatic, Upper G)

- Women's Health
- Gynaecology
 - Maternity care

- Critical Care Stream
- Emergency Department
 - ICU (including Organ & Tissue Donation and Medical Emergency Team)

- Medical Imaging Stream
- Diagnostic Radiology
 - Nuclear Medicine

- Mental Health
- Perinatal, Child, Adolescent and Youth Services
 - Adult services
 - Older Persons Mental Health
 - Consultation Liaison

- Primary and Community Health
- Child, Youth and Family Services
 - Community Nursing (including Triple I Hub)
 - Risk of Hospitalisation
 - Domestic violence /sexual assault/PARVAN/elder /Forensic

- Other District Services
- Oral Health
 - Drug Health
 - Aboriginal Health and Chronic Conditions

- Model of Service Delivery
- Perioperative (including Emergency Surgery, Elective Surgery, High Volume Short Stay, Anaesthetics)
 - Procedural
 - Interventional Radiology
 - Interventional Cardiology
 - Endoscopy
 - Outpatients

- Support Services
- Telehealth and Virtual Care
 - Integrated Care
 - ICT
 - Pharmacy
 - Pathology
 - Corporate (including Cleaning, Security, Food Services, etc)
 - Allied Health
 - Equipment and consumables
 - Mortuary
 - Disability Support
 - Cultural Safety (including Health Language Services)
 - Facility/Service Management
 - Education, Teaching and Training
 - Transport
 - Patient and Carer Support and Amenity
 - Pastoral care (including Volunteers)
 - PARVAN – prevention and response to violence abuse and neglect
 - Staff Health & Wellbeing