

The Cambridge Diabetes Education Programme—**AUSTRALIA** (Aus-CDEP)

Competency based online diabetes education program.

Topics are fundamental to manage patients with diabetes and are designed to improve quality of care.

AusCDEP supports health professionals to assess and demonstrate their 'knowledge' and 'know how' in diabetes management. Based on the national competency diabetes frameworks.

**FREE TO PRIMARY HEALTH CARE
PROFESSIONALS WORKING IN SOUTH
WESTERN SYDNEY**

To register your FREE Aus-CDEP account:

1. Access the website: www.aus-cdep.com
2. Click on the link: SIGN IN/REGISTER
3. Under NEW CANDIDATE REGISTRATION enter your email address, (this can be work or personal) and click CREATE ACCOUNT.
4. On the registration page, enter a password then input the **FREE REGISTRATION KEY CODE: SWSPHN2017**
5. Enter your name and practice details.
6. Select YOUR DIABETES LEVEL relevant for your role.
7. Click REGISTER NOW.
8. You can now access the CDEP topics under I HAVE AN ACCOUNT by entering your EMAIL and PASSWORD.
9. Enquiries to:
SWSLHD-CampbelltownAUSCDEP@health.nsw.gov.au

TOPICS

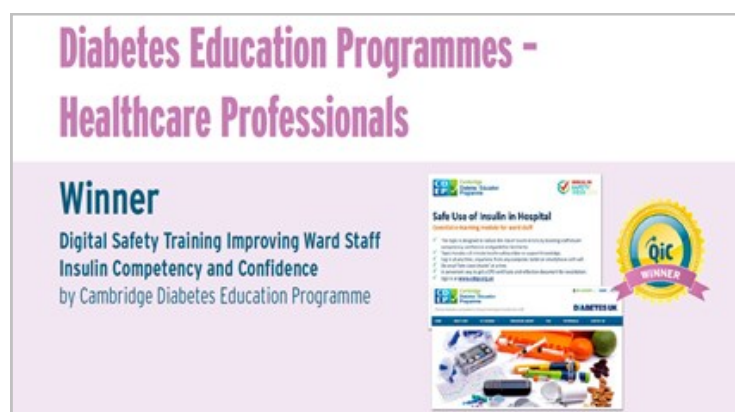
- Hospital Hypos
- Safe use of insulin in hospital
- Promoting Self-care
- What is Diabetes
- Hypoglycaemia
- Oral Therapies
- Injectable Therapies
- Nutrition
- Blood glucose and ketone monitoring
- Pregnancy: Pre-conception Care
- Managing adults with diabetes in hospital

DESCRIPTION OF AusCDEP

AusCDEP is not a traditional online program. This program provides short learning resources and a series of competency based questions on fundamental diabetes competencies. It enables the participant to measure their applicable clinical knowledge and skill against national expected diabetes competencies for clinical staff at all levels of diabetes expertise. The program is divided into Topics and Competencies derived from national competency frameworks in diabetes.

Aus-CDEP REGISTRATION LEVEL:

1. **Core** (minimum level for having any contact with people living with diabetes)
2. **Intermediate** (roles that have regular contact with people living with diabetes and may administer medication or provide basic care, but do not prescribe or adjust medication)
3. **Diabetes specialist** (roles that directly support people managing their diabetes, including the provision of diabetes education and advice as well as prescription or adjustment of medication)
4. **Diabetes expert** (roles that intensively support highly complex patients with diabetes)
5. **Diabetes consultant** (roles that are responsible for managing a specialist caseload as well as leading service design, workforce planning, business case development)



WINNER UK'S NATIONAL QUALITY CARE DIABETES AWARDS